

# E-Bit 系列 SF<sub>6</sub> 空气绝缘环网柜



电网智能化解决方案  
Intelligent Power Grid Solution



**DEYLE**  
Intelligent Electric

# 关于我们

## ABOUT US

### COMPANY PROFILE

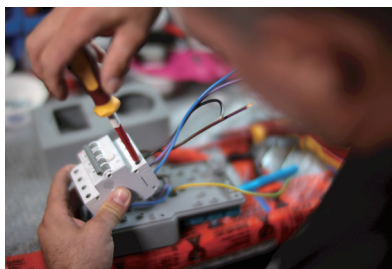
60多年来，原创的Deyle输配电产品确保了向用户提供了可靠的电力传输分配系统。我们第一批安装的产品至今仍在使用中，由此证明了我们产品的出色质量和可持续性。自1954年以来，我们不断为客户提供接触式母线、微型开关、插座分配单元、电缆馈线导轨、中低压断路器及配电智能化产品的解决方案。

2005年，Deyle power增加了中低压配电产品系列，为欧洲的工业客户提供了更多的选择范围，我们的智能化配电全系列通过我们的合作伙伴已经进入了欧洲、北美及中东市场。

2018年，Deyle Power在南京成立了中国第一家Deyle的合资企业代勒南京，专注于中低压断路器及配电智能化产品的研发及制造。

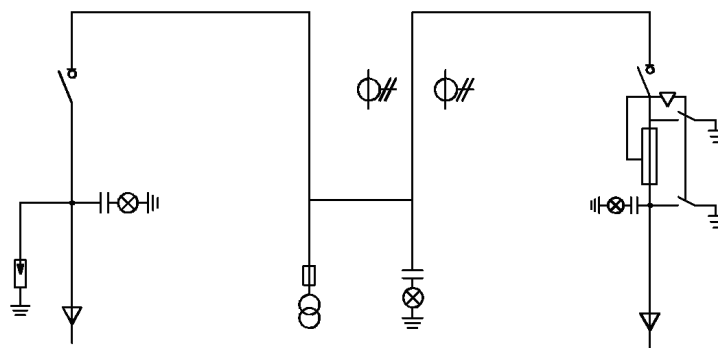
Deyle Power不但为客户提供卓越且绝对可靠的产品，同时为客户提供优质的售后服务。

请记住，如果您计划全线供电时，请与我们联系。我们很高兴以60年的专业知识和丰富的经验为您提供专业的服务。



# 目录 CONTENTS

设计原理	02
应用领域	03
柜型方案	04
技术数据	06



## 设计原理/Design principles

E-Bit-12 开关柜，是轻便灵活的开关设备。结构简单，操作灵活，联可靠，加之模块化设计和后部泄压通道的设置，使开关柜更具安全、可靠的特性。

E-Bit-12 是新一代空气绝缘的金属封闭开关设备，经过不断地改进，使其完美的性能及灵活装配的特点可完全满足市场不断变化的需求。

E-Bit-12 为各种不同的应用场合提供了远期的技术方案。安全、方便和对环境保护是我们开发开关柜的目的。

E-Bit-12 开关柜是一种适用于配电自动化的既紧凑又可扩充的开关设备。最新保护继电器的采用，使开关柜即便使用于运行要求苛刻的医院和机场，仍胜任自如。

E-Bit-12 开关柜是多年家积的制造经验而开发出的产品，符合各地区客户的要求。



The type of the E-Bit-12 switchgear is a portable and flexible gas insulated switchgear. Simple structure, flexible operation, reliable interlocking, combined with modular design and the back pressure relief channel setting, make the switch cabinet more safety and reliable. It is a new generation of air-insulated metal-enclosed switchgear. Through continuous improving and perfected the features, perfect performance and flexible assembly, it can completely meet the changing demands of the market.

E-Bit-12 provides a long-term technical solution for a variety of applications. Safety, convenience and environmental protection are the purposes of our development of switchgear.

E-Bit-12 switchgear is a compact and expandable switchgear device which is suitable for distribution automation. The use of the latest protection relay, makes it still competent even if the switch cabinet is used to run the demanding hospital and airport.

E-Bit-12 switchgear is a product that has accumulated over many years, which is in line with the requirements of customers in all regions.



## 应用领域/Application field

E-Bit-12开关柜能为中压系统提供最好的解决方案,外形尺寸紧凑。

E-Bit-12 switch cabinet can provide the best solution for medium voltage system.



紧凑型二次变电站



小型工厂



风力发电站



酒店、购物中心、  
办公楼等



轻型采矿设备、隧道与地铁

- 技术参数的灵活性和便于后期改造升级。

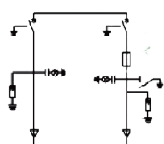
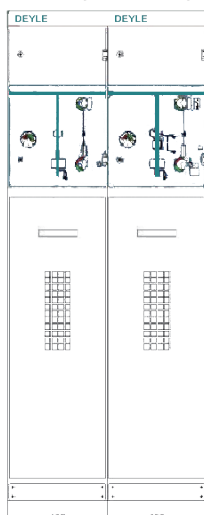
The flexibility of the technical parameters and the transformation and upgrading of the latter.

- 可选配全套控制、测量和保护系统。

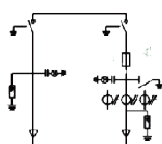
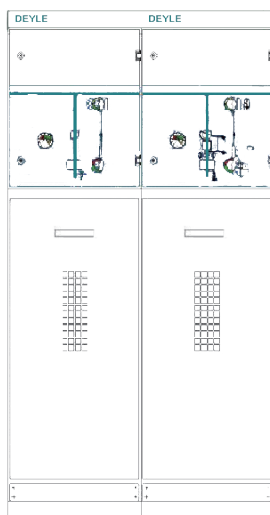
Optional full control, measurement and protection system.

## 柜型方案/Switchgear module

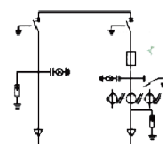
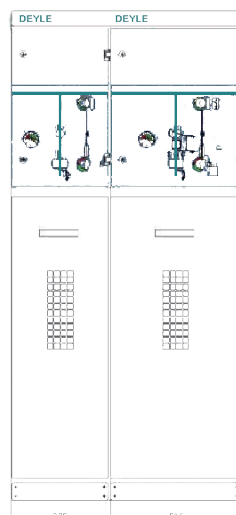
375 进出线  
incoming and outgoing



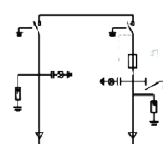
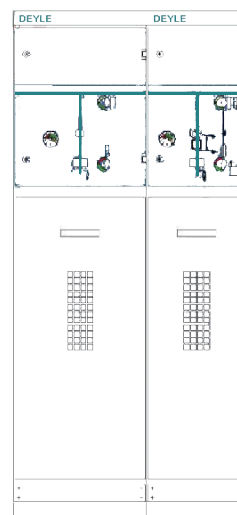
500 进出线  
incoming and outgoing



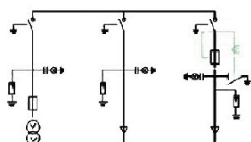
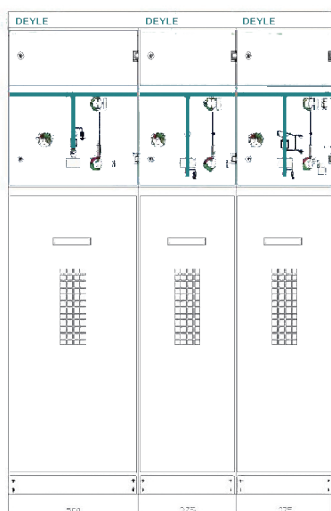
375 进线 + 500 出线  
375 incoming + 500 outgoing



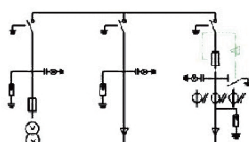
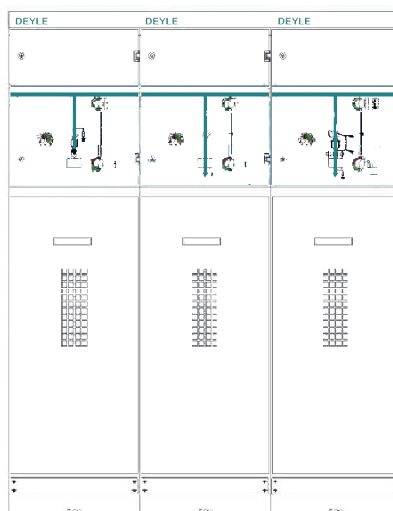
500 进线 + 375 出线  
500 incoming + 375 outgoing



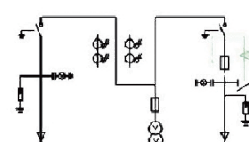
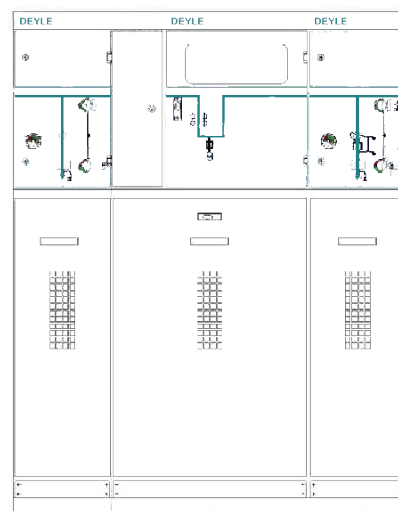
PT+375 进出线  
incoming and outgoing



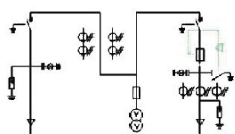
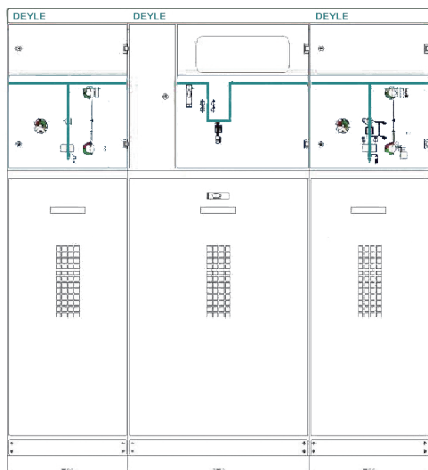
PT+500 进出线  
incoming and outgoing



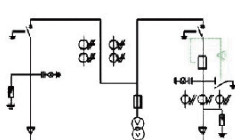
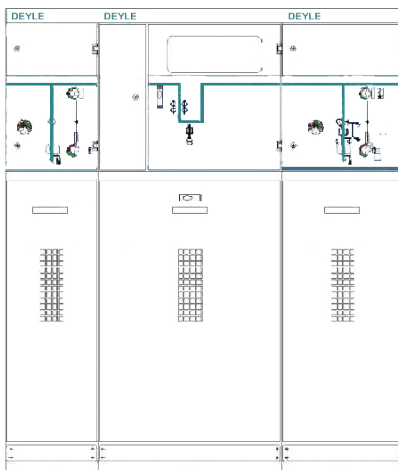
375 进线 + 计量 + 375 出线  
375 incoming + metering + 375 outgoing



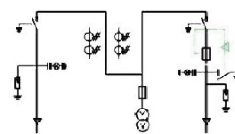
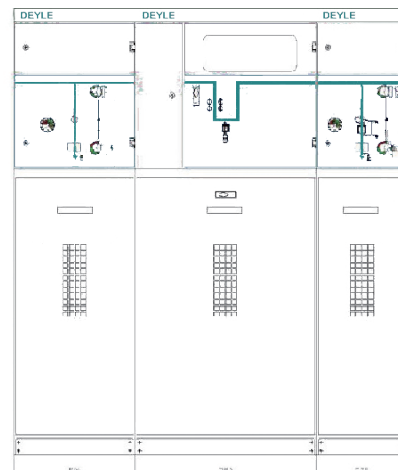
500 进线+计量 +500 出线  
500 incoming +metering +500 outgoing



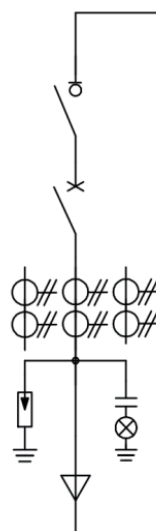
375 进线+计量 +500 出线  
375 incoming +metering +375 Outgoing



500 进线+计量 +375 出线  
500 incoming +metering +500 cutgoing



750进出线  
incoming and outgoing



750mm



750mm

## 技术数据/Technical parameters

### 环网柜技术参数/Ring Main Unit Technical Parameters

序号 No.	项目名称 Item	单位 Unit	E-Bit-L-12/630-25	E-Bit-LF-12/125-31.5	E-Bit-LV-12/630-25
1	额定电压 Rated voltage	kV	12	12	12
2	额定电流 Rated current	A	630	125	630
3	额定频率 Rated frequency	Hz	50	50	50
4	额定短时工频耐受电压 Rated frequency withstand voltage	kV	42/48	42/48	42/48
5	额定雷电冲击耐受电压 Rated lightning impulse withstand voltage	kV	75/85	75/85	75/85
6	额定有功负载开断电流 Rated mainly active load breaking current	A	630		630
7	配电线路闭环开断电流 Rated closed-loop distribution circuit current	A	630		630
8	额定短路关合电流(峰值) Rated short-circuit making current (peak)	kA	63	80	63
9	额定峰值耐受电流 Rated peak withstand current	kA	63	63	63
10	额定短时耐受电流 Rated short-time withstand current	kA	25	25	25
11	额定短路持续时间 负荷开关 Rated duration of short circuitload break switch	s	4	4	4
12	SF <sub>6</sub> 气体额定压力(20℃表压) Rated SF <sub>6</sub> gas pressure(20℃ gauge)	MPa	0.04	0.04	0.04
13	回路电阻 Loop resistance	μΩ	≤200	≤400	≤200
14	机械寿命 负荷开关/接地开关 Mechanical enduranceload break switch / earthing switch	kA	5000/3000	5000/3000	5000/3000
15	额定短路开断电流 Rated short-circuit breaking current	kA	25/63	31.5 63	25/63
16	额定转移电流 Rated transfer current	A	空白	1750	空白
17	防护等级 Degree of protection		IP4X	IP4X	IP4X





代勒智能电网技术(南京)有限公司

地址：南京市江北新区龙泰路8号润诚科技园2号楼

电话：025-58823897 025-86402506

#### 申明 DECLARATION

版权所有。未经本公司之书面许可，此手册任何段落、章节内容不得被摘抄、拷贝或以任何形式复制、传播，否则一切后果由违者自负，本公司保留一切法律权利。

本公司保留对本手册所述之产品规格进行修改的权利，恕不另行通知，订货前，请垂询当地代理商以获悉本产品的最新规格。

No part of this publication may be reproduced, stored in a retrieval system or transmitted in any form by any means, electronic, mechanical, photocopying, recording, or otherwise without prior permission of Arel. All rights reserved.  
This company reserve power or revision of product specification described in this manual, without notice. Before ordering, please consult local agent for the latest specification of product.



DEYLE-2021.09PSG-MCCB-S3-V2.0